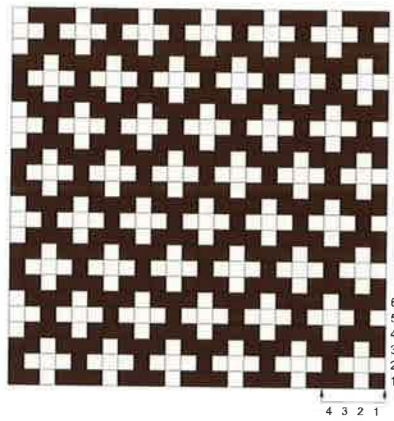


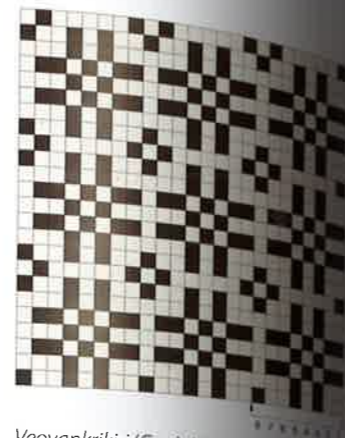
Some examples of glove and mitten patterns



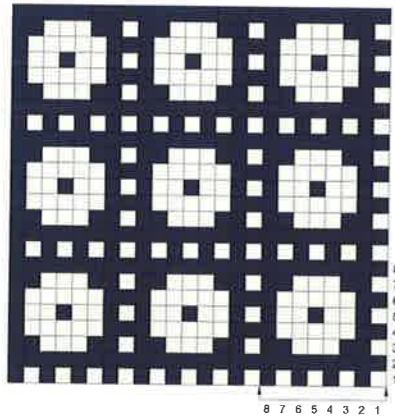
Kärbskiri (Fly), Lüganuse parish
ERM A 509:3124



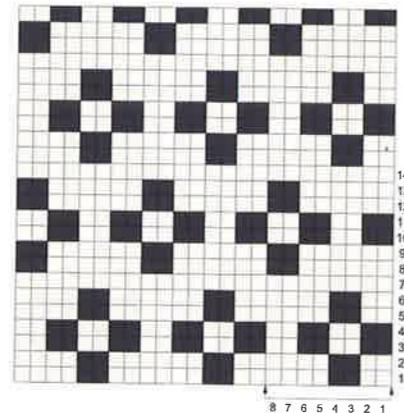
Hanesilmakiri (Goose's eye),
Väike-Maarja parish
ERM 13151



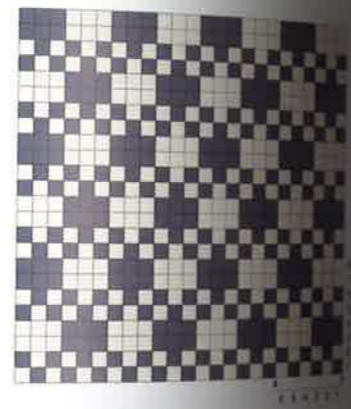
Veovankrikiri (Cart), Hanila parish
ERM A 509:3049



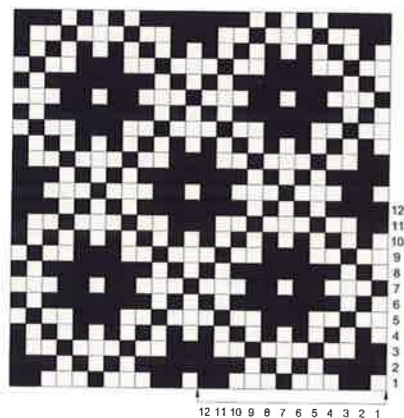
Lambakiri (Sheep), Lüganuse parish
ERM A 509:2785



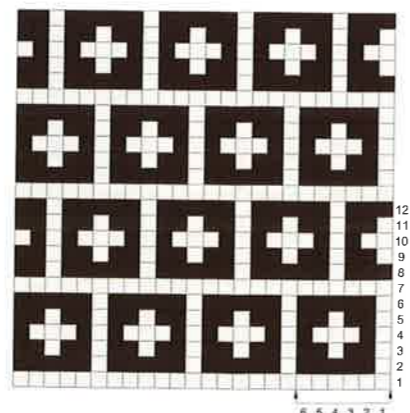
Lumekiri (Snow), Röpina parish
ERM 2630



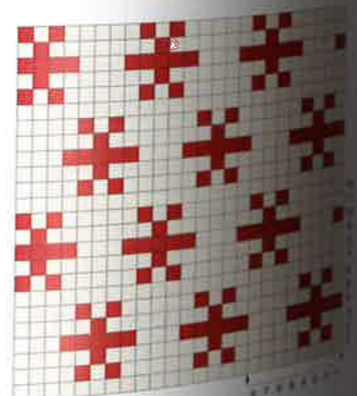
Sookiri (Swamp), Helme parish
ERM 3506



Kaheksa silma sarviku kiri (Eight-eyed Devil), Helme parish
ERM 3443



Kärbsetiivakiri (Fly's wing), Jüri parish
ERM A 509:3112



Lumeräitsakiri (Snowflake),
Paistu parish
ERM A 509:2923

Some examples of glove and mitten patterns



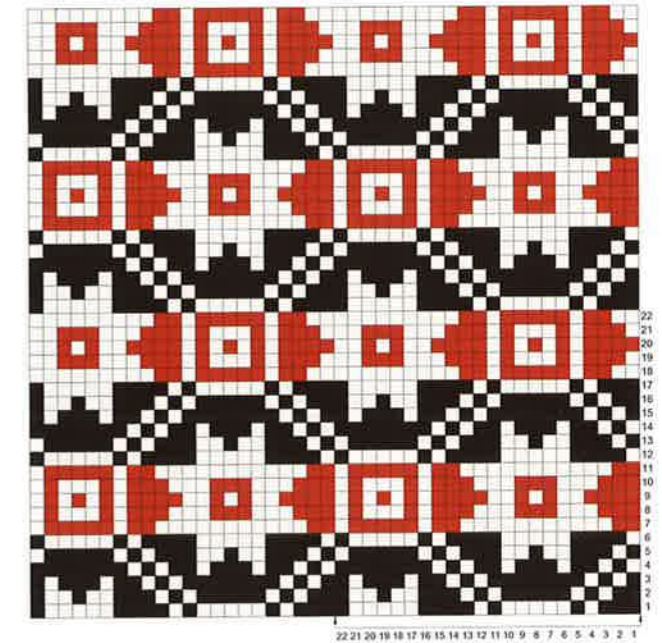
Amelikukiri (Spider), Helme parish
ERM 3499



Harkjalakiri (Fork leg), Helme parish
ERM 3457



Oskukiri (Bean blossom), Rapla parish
ERM 3085



Ohvikirstukiri (Treasury), Märjamaa parish
ERM 11582

For more mitten and glove patterns along with cuff patterns, see *Estonian Knitting III: Gloves and Mittens*.

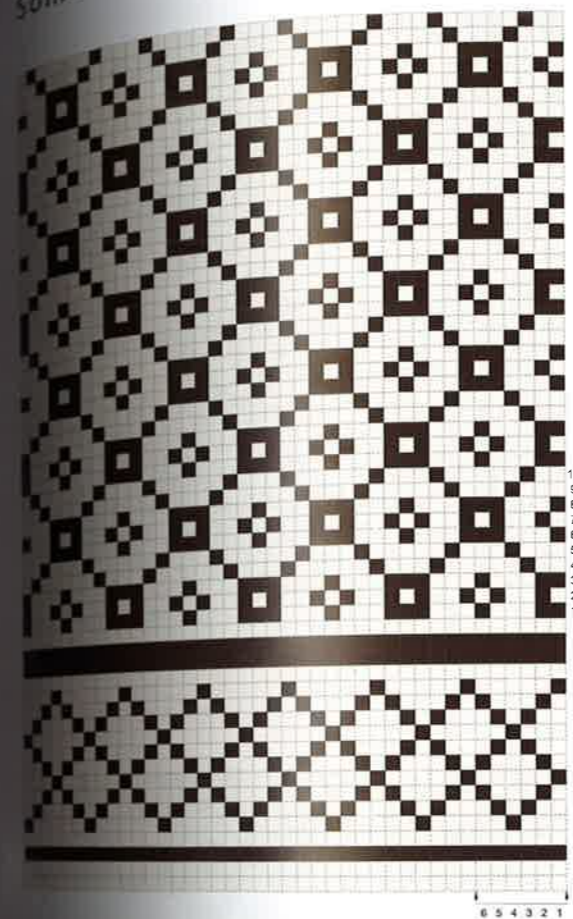
Sock pattern



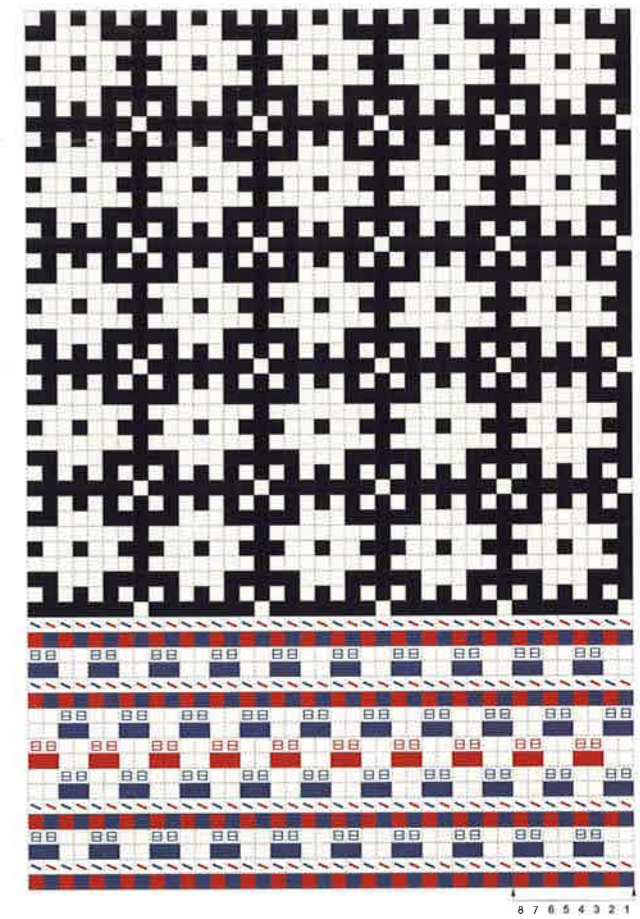
Sock pattern from Muhu (see page 30).
Muhu Museum JSM 462:E333

For more sock and stocking patterns, see
Estonian Knitting II: Socks and Stockings.

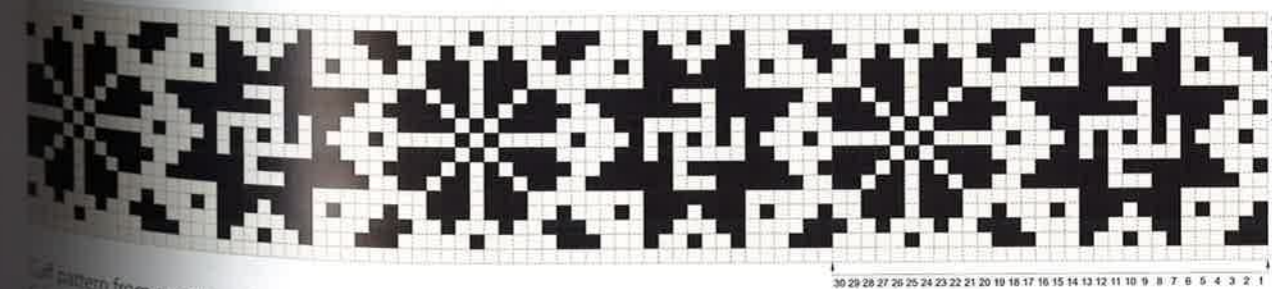
Some examples of jumper patterns



Pattern from a men's jumper from Jämaja parish (the edging has a 4-stitch repeat and the main pattern a 10-stitch repeat).
ERM 12573



Pattern from a men's jumper from Kihnu island (see page 182 for how to knit a Herringbone braid).
ERM EJ 202:18



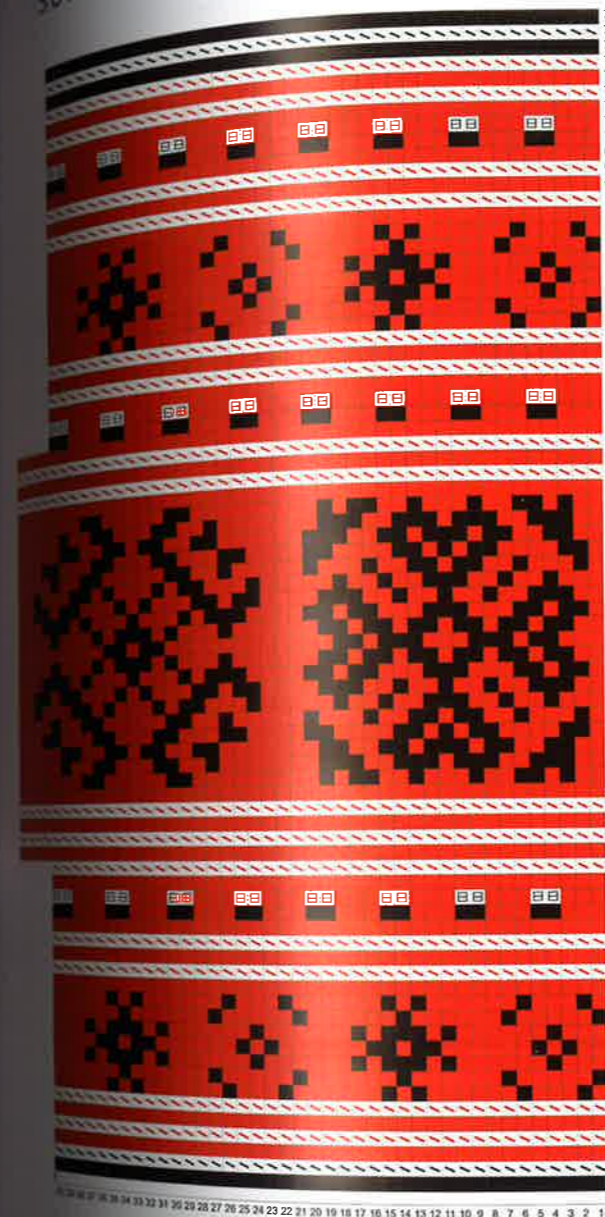
Pattern from an otherwise white women's jumper from Ruhnu island (see pages 55 and 149).
Muhu Museum

Some examples of jumper patterns

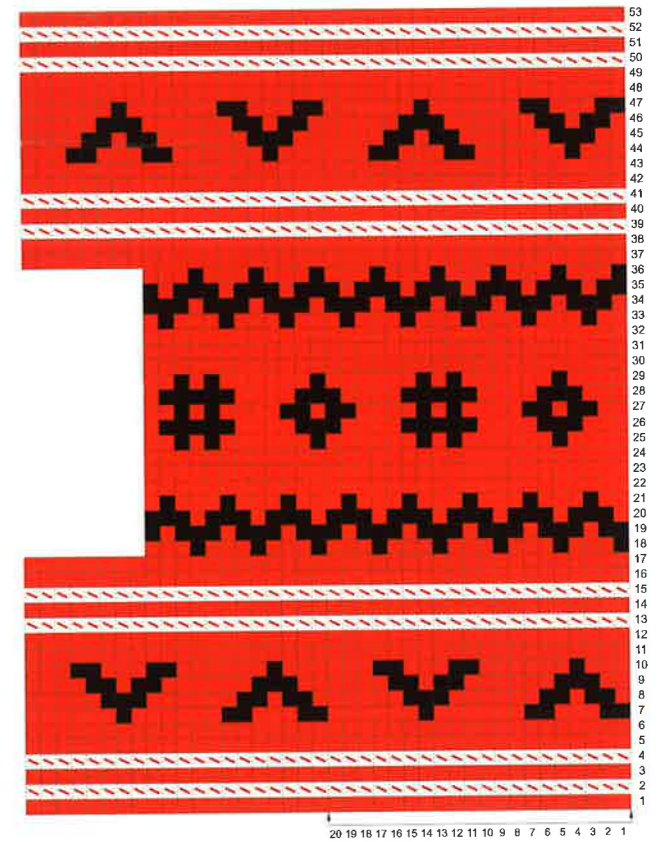


Main pattern from men's jumper from Muhu island (see page 47).
Muhu Museum JSM 768 E 1868:1

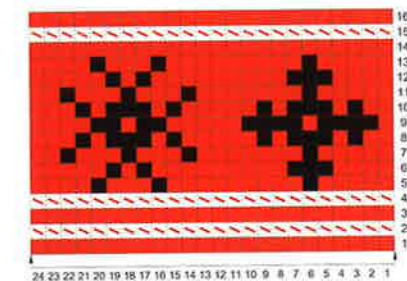
Some examples of jumper patterns



Hem pattern
Muhu Museum JSM 768 E 1868:1

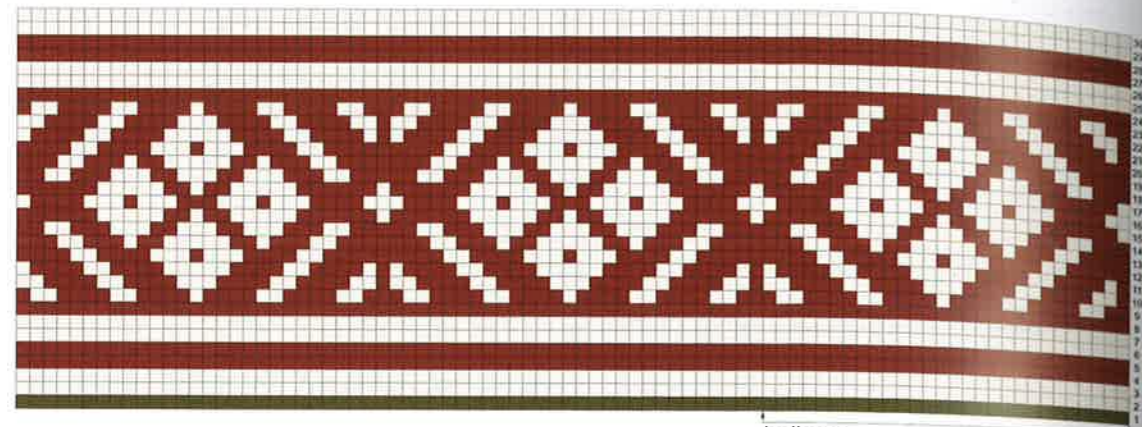


Shoulder strap pattern
Muhu Museum JSM 768 E 1868:1

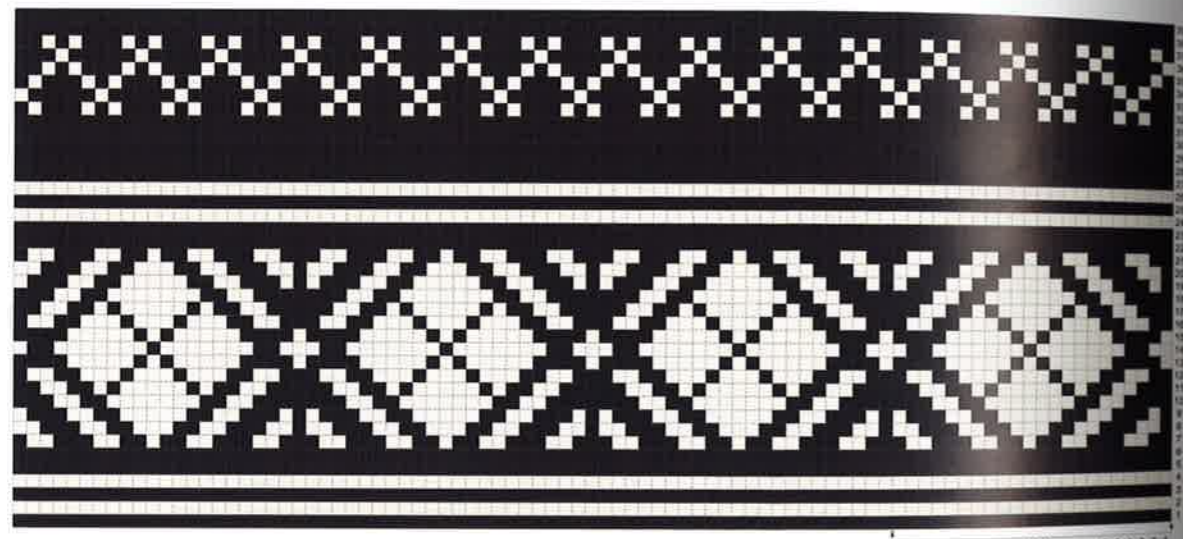


Pocket welt pattern
Muhu Museum JSM 768 E 1868:1

Some examples of hat patterns



Pattern from a hat knitted in Mustjala parish (see page 65). | ERM A 290:267



Pattern from a hat knitted in Mustjala parish (see page 60). | ERM A 290:263

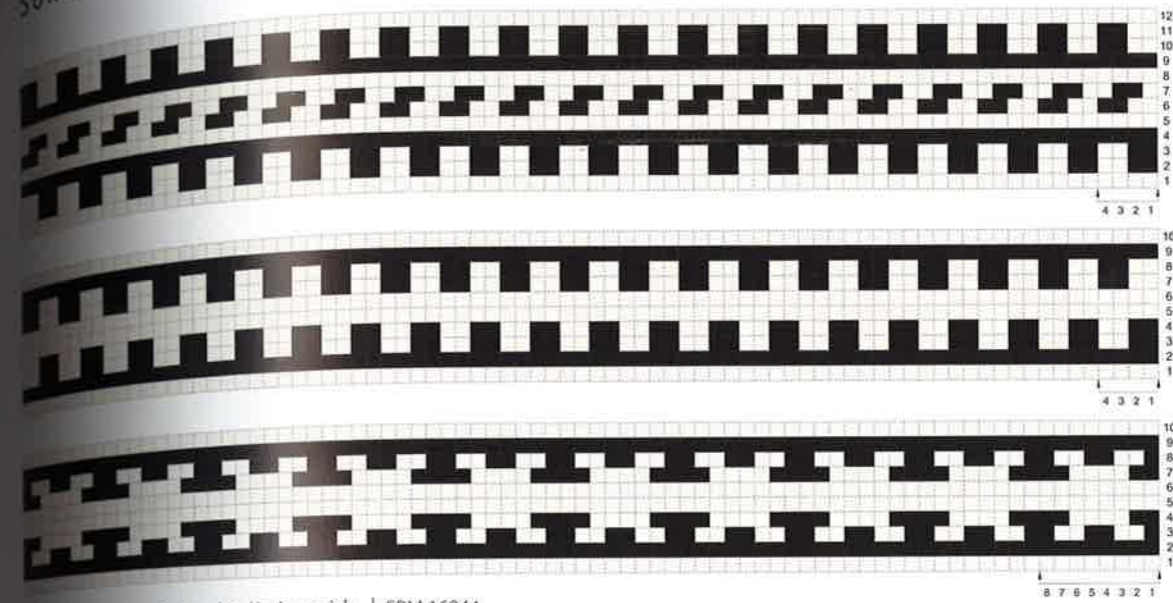


Pattern from a women's hat knitted in Kihelkonna parish (see page 63). | ERM 4798



Pattern from a women's hat knitted in Kihelkonna parish. | ERM 16537

Some examples of hat patterns



Patterns from a hat knitted in Karja parish. | ERM 16944



Patterns from a men's hat knitted in Vigala parish (see page 65). | ERM 9928

☒ EYELETS

Increases and decreases have been abundantly used in lace knitting (see page 238), yet many examples of Estonian knitting feature eyelet rows, which would be difficult to associate with lace. The eyelet band looks very much like a row of beads if enclosed between two braids. This was used to end a cuff or to transition from the cuff to the main pattern on a glove or a mitten, and also on the upper edges of stockings. This type of embellishment has also been called 'peas' (*herned*). This is a very apt name, despite it having limited popularity and lacking a link to a definite source.

Rounds of eyelets are made by repeating a yarn over and a knit decrease side by side.



A glove from Kihnu island. An indigo blue eyelet band has two purl rounds on each side.

EVM E 231:3



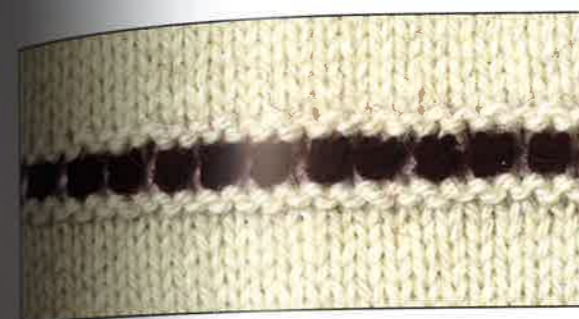
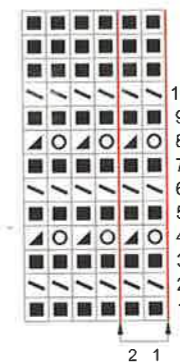
Close-up of a glove cuff, knitted in Põide parish. A green-blue eyelet round is nested between two twisted braids. ERM A 290:767



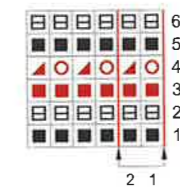
Eyelets on the cuff of a stocking, knitted in Viljandi parish. Viljandi Museum VM 2794 E 149



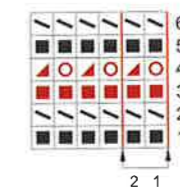
Rounds of eyelets, typical of stocking cuffs.



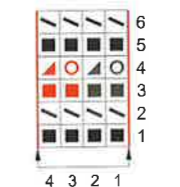
A coloured band of eyelets between purl rounds.



A coloured band of eyelets between twisted braids.



Band of eyelets in two colours.



CONTENTS



FROM ANCIENT TIMES TO THE PRESENT	7	TOOLS AND MATERIALS	85
THE STUDY OF HAND KNITTING	8	Knitting needles	86
Timeline	10	Knitting bags	88
The oldest knitted items found in Estonia	13	Yarns	90
Examples of <i>nålbinding</i>	13	About contemporary yarns	94
The Jõuga find	14	Traditional Estonian colours	96
The Siksälä find	15	Different places, different colour palettes	100
Finds from Tartu	15	in knitting	
The Tallinn find	18	TECHNIQUES	107
The Rabivere bog find	19	Holding the yarn and needles	109
Stocking finds	22	Cast-ons	111
18TH–19TH CENTURY KNITTED ITEMS IN	23	Long-tail cast-on	112
Estonian museums		Long-tail cast-on in two colours	113
Using the public portal of Estonian museums	24	Braided cast-on	114
muis.ee		Twisted-loop cast-on	115
Private collections	25	Left-slanting long-tail cast-on	116
Preserving vintage knitwear	25	Herringbone cast-on	117
WHAT DID ESTONIANS KNIT	26	Combined long-tail cast-on	118
IN THE 18TH AND 19TH CENTURIES?		Loop cast-on	119
Leg warmers	28	Provisional cast-on	120
Socks	30	Knitted cast-on	121
Stockings	32	Chain cast-on	122
Mittens	36	Chain cast-on in two colours	123
Gloves	40	The basics	124
Wrist warmers	42	Knitting backwards	126
Jackets and jumpers	44	Eastern and Western knitting	127
Underwear	57	Twisted stitches	128
Caps	58	Knitting in the round	130
Men's belts	66	Cast-offs	131
Swaddle belts	67	How to improve your knitting	132
Scarves and shawls	68	Pattern instructions	134
Machine knitting	74	Reading a chart	135
THE 20TH CENTURY	76		
		Rib patterns	136
		Knit and purl combinations	141
		Stranded colourwork	152
		Intarsia in the round	154
		Stranding with purl stitches	156
		Some examples of glove and mitten patterns	158
		Some examples of sock and stocking patterns	160
		Some examples of jumper patterns	163
		Some examples of hat patterns	170
		Inlay	174
		Braids	180
		Twisted braid	180
		Herringbone braid	182
		Horizontal chain	183
		Increases and decreases	184
		Eyelets	190
		Travelling stitches	192
		How to knit travelling stitches	194
		Some examples of travelling stitch patterns	198
		Cables	208
		How to knit cables	209
		Some examples of cable patterns	212
		Nupps and bobbles	214
		Nupp	215
		Bobble	216
		Nubble	217
		Peppercorn	218
		Raised texture patterns	219
		Brioche	222
		Lace	234
		How to knit lace	236
		Some examples of lace patterns	238
		A selection of blaze shawl patterns	252
		A selection of Haapsalu lace patterns	256
		Slip-stitch patterns	258
		Entrelac	262
		How to knit entrelac	263
		How to knit entrelac backwards	266
		How to avoid colour bleeds	267
		Entrelac in flat knitting	268
		Faux entrelac	269
		Short rows	270
		Fringes	272
		Sewn fringe	273
		Knitted fringe from Pärnumaa	276
		Twisted fringe	278
		Knitted fringe from Ruhnu island	279
		Thrums	280
		Knotted fringe	281
		Borders and edgings	282
		Bound edges	282
		Chevrons	283
		Triangle edge knitted sideways	286
		Ruffles	287
		Hems	288
		Embellishments	291
		Duplicate stitch	291
		Embroidery	292
		Beaded knitting	294
		Stitch symbols	296
		References	298
		About the authors	300